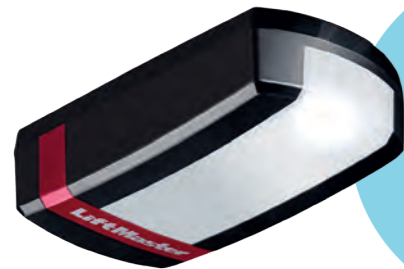




# LM100EVF MYQ DC GARAGE DOOR OPENER

Maintenance-free, ultra-quiet including LED light.

## KEY FEATURES



### SPACE-SAVING

Design maximizes versatility

### LED LIGHT

LED turns on with activation

### LIFTING

For doors up to 150 kg

### MYQ

Built In



## SMART

**SPACE-SAVING DESIGN** OPENS UP THE CEILING.

**BELT DRIVE SYSTEM** FOR POWERFUL PERFORMANCE.

**SOFT-START AND SOFT-STOP** FOR SMOOTH OPERATION.

**MYQ MOBILE APP** LETS USERS RECEIVE ALERTS AND CONTROL THE OPENER FROM ANYWHERE.

## QUIET AND RELIABLE

**QUIET DC MOTOR** ELIMINATES NOISE AND VIBRATIONS THROUGH THE CEILING AND PROVIDES SMOOTH OPERATION.

**HEAVY-LIFTING POWER** OPERATES DOORS UP TO 150 KG.

**MAINTENANCE-FREE BELT DRIVE** ENSURES QUIET & DURABLE OPERATION.

**WARRANTY** MOTOR: 8 YEARS, CONTROL BOARD: 5 YEARS, ACCESSORIES: 2 YEARS.

## SECURE & SAFE

**AUTOMATIC GARAGE DOOR OPENERS** IMPEDE UNAUTHORIZED ACCESS TO THE GARAGE.

**TIMER-TO-CLOSE** AUTOMATICALLY CLOSES THE DOOR AFTER A PRESET AMOUNT OF TIME.

**EVOLUTION RADIO (SECURITY+ 2.0®)** SENDS A NEW CODE WITH EVERY REMOTE CLICK.

**AUTOMATIC FORCE SETTING & OBSTACLE DETECTION.**

## INCLUDED ACCESSORIES:

### 4-CHANNEL REMOTE CONTROL

Operates up to 4 openers. Compact to provide quick, easy garage access.



TX4EVF

### 2-BUTTON WIRELESS WALL CONTROL

Operates up to 2 openers. Control your garage door without a remote control.



128EV

## POWERFUL ADD-ONS:

### INTERNET GATEWAY

MyQ® technology that connects to the internet and allows monitoring and control of the garage door opener.



828EV

### GARAGE DOOR MONITOR

MyQ enabled technology allows monitoring and closing up to four garage doors from any room in the house.



829EV

### WIRELESS KEYPAD

Provides convenient, secure access from outside the garage with a 4-digit PIN, temporary PIN possible.



747EV

### LED FLASHING LIGHT

Lamp flashes while the drive is in action. Applicable for all garage door and gate door openers.



FLA1-LED

### FAILSAFE SAFETY SENSOR

2-wire system with LiftMaster signal IP44, range 15 meters.



772E

## MASTERFUL ENGINEERING.

### MOTOR

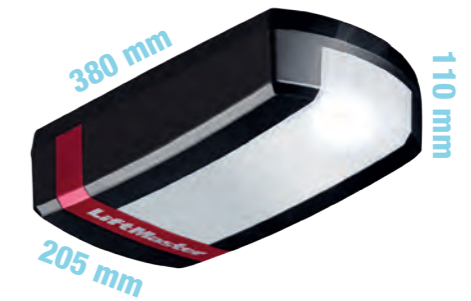
- Residential-Duty 24 V DC
- Automatic Thermal Protection
- Permanent Lubrication
- Operating Temperature: -30°C to 55°C

### POWER

- 230-240 V AC
- 50/60 Hz Voltage
- 0.8 W Stand-by Power
- 80 cm Power Cord (Euro plug)<sup>1</sup>

### MECHANICS

- High Quality Chassis and Cover
- Reliable & Quiet Belt Drive Mechanism
- Automatic Force Setting
- Electronic Limits for Easy Setup
- Maintenance-Free Operation thanks to Belt Drive
- 90° Rotation of Power Head for Space Saving



1000N  
MYQ DC GARAGE DOOR OPENER  
FOR DOORS UP TO 150 KG.

Max. 200 mm

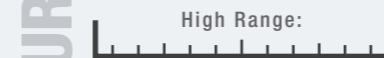
Per second for door to move upward

Max. 200 mm

Per second for door to move downward

## STANDARD SPECS.

### EVOLUTION RADIO (Security+ 2.0®)



- 4-Button Remote Control (TX4EVF)
- Remote Control: 868 MHz Tri-Band
- Garage Door Opener: Frequency Agile on 433 and 868 MHz
- Copy-Protected Coding

### MyQ RADIO



- Provides 2-way communication from garage door opener and MyQ accessories.
- Enables monitoring and control of garage door openers controls via smartphone, tablet or computer.
- Receiver with 180 memory registers.

### HOMELINK® COMPATIBLE (VERSION V OR SOFTWARE REV. 8)<sup>2</sup>

<sup>1</sup>UK adapter available.

<sup>2</sup>May require an external adapter depending on the model and year of your vehicle. Visit HomeLink.com for additional information.

### ELECTRICAL LIGHTING LED LIGHT



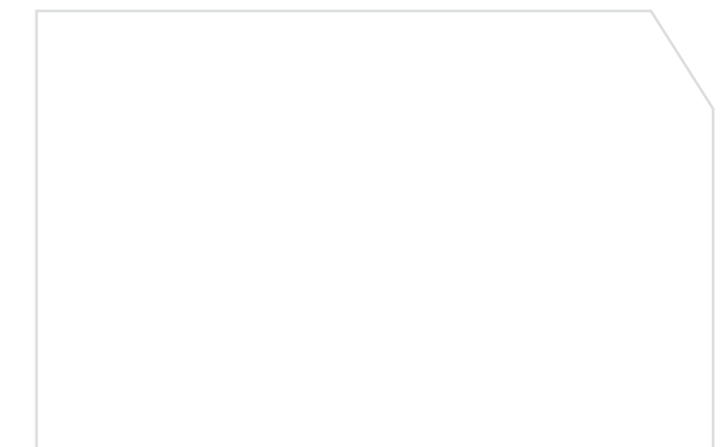
- LED turns on with activation
- Turns off 2.5 minutes after operation
- 0.8 W Stand-by Power

## SAFETY AND SECURITY.

- External Quick Release (optional)
- Automatic Trolley Reconnect
- Down Safety Reverse
- Up Safety Stop
- Flashing Light Connector
- Door-in-Door Connector
- Timer to Close (automatic close) Programming (when safety sensors connected)



For more information visit us at [liftmaster.eu](http://liftmaster.eu) or contact your local dealer.



LM100EVF 1000N  
MYQ DC GARAGE DOOR OPENER  
FOR DOORS UP TO 150 KG

© 2018 LiftMaster All Rights Reserved  
Chamberlain GmbH, Alfred-Nobel-Str. 4, D-66793, Saarwellingen  
LiftMaster.eu, WEEE-Reg.Nr. DE66256568  
MyQ® is a registered trademark of Chamberlain Group  
HomeLink® is a trademark of Gentex Corporation  
9SLM100EVF02

