

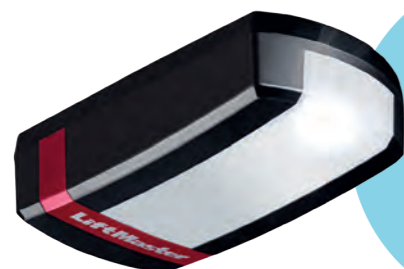


LM130EVF MYQ DC GARAGE DOOR OPENER

1300N

MYQ DC GARAGE DOOR OPENER FOR DOORS UP TO 200 KG.

Maintenance-free, ultra-quiet including safety sensors and LED light.



KEY FEATURES

SPACE-SAVING

Design maximizes versatility

LED LIGHT

LED turns on with activation

HEAVY LIFTING

For doors up to 200 kg

MYQ

Built In



SMART

SPACE-SAVING DESIGN OPENS UP THE CEILING.

BELT DRIVE SYSTEM FOR POWERFUL PERFORMANCE.

SOFT-START AND SOFT-STOP FOR SMOOTH OPERATION.

MYQ MOBILE APP LETS USERS RECEIVE ALERTS AND CONTROL THE OPENER FROM ANYWHERE.

QUIET AND RELIABLE

QUIET DC MOTOR ELIMINATES NOISE AND VIBRATIONS THROUGH THE CEILING AND PROVIDES SMOOTH OPERATION.

HEAVY-LIFTING POWER OPERATES DOORS UP TO 200 KG.

MAINTENANCE-FREE BELT DRIVE ENSURES QUIET & DURABLE OPERATION.

WARRANTY MOTOR: 10 YEARS, CONTROL BOARD: 5 YEARS, ACCESSORIES: 2 YEARS.

SECURE & SAFE

AUTOMATIC GARAGE DOOR OPENERS IMPEDE UNAUTHORIZED ACCESS TO THE GARAGE.

TIMER-TO-CLOSE AUTOMATICALLY CLOSES THE DOOR AFTER A PRESET AMOUNT OF TIME.

EVOLUTION RADIO (SECURITY+ 2.0®) SENDS A NEW CODE WITH EVERY REMOTE CLICK.

AUTOMATIC FORCE SETTING & OBSTACLE DETECTION.

FAILSAFE INFRARED SENSOR AUTO-REVERSES THE DOOR IF THERE'S AN OBSTRUCTION.

INCLUDED ACCESSORIES:

4-CHANNEL REMOTE CONTROL TX4EVF
Operates up to 4 openers. Compact to provide quick, easy garage access.

2-BUTTON WIRELESS WALL CONTROL 128EV
Operates up to 2 openers. Control your garage door without a remote control.

FAILSAFE SAFETY SENSOR KIT 771EVK
Incl. wall mount and cables. LED indicates the IR sensors continuity.

POWERFUL ADD-ONS:

INTERNET GATEWAY 828EV
MyQ technology that connects to the internet and allows monitoring and control of the garage door opener.

GARAGE DOOR MONITOR 829EV
MyQ enabled technology allows monitoring and closing up to four garage doors from any room in the house.

WIRELESS KEYPAD 747EV
Provides convenient, secure access from outside the garage with a 4-digit PIN, temporary PIN possible.

LED FLASHING LIGHT FLA1-LED
Lamp flashes while the drive is in action. Applicable for all garage door and gate door openers.

MASTERFUL ENGINEERING.

MOTOR

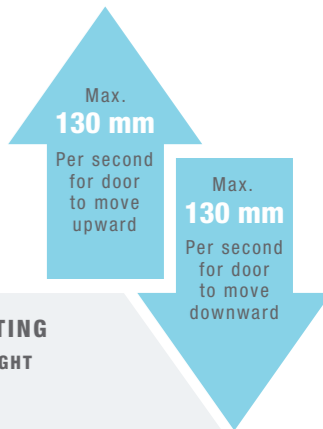
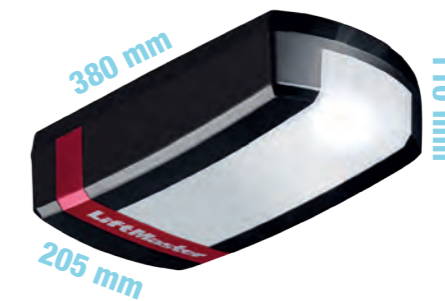
- Heavy-Duty 24 V DC
- Automatic Thermal Protection
- Permanent Lubrication
- Operating Temperature: -30°C to 55°C

POWER

- 230-240 V AC
- 50/60 Hz Voltage
- 0.8 W Stand-by Power
- 80 cm Power Cord (Euro plug)¹

MECHANICS

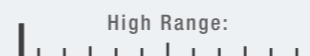
- High Quality Chassis and Cover
- Reliable & Quiet Belt Drive Mechanism
- Automatic Force Setting
- Electronic Limits for Easy Setup
- Maintenance-Free Operation thanks to Belt Drive
- 90° Rotation of Power Head for Space Saving



STANDARD SPECS.

SECURE

EVOLUTION RADIO (Security+ 2.0®)



- 4-Button Remote Control (TX4EVF)
- Remote Control: 868 MHz Tri-Band²
- Garage Door Opener: Frequency Agile on 433 and 868 MHz
- Copy-Protected Coding

SMART

MyQ RADIO



- Provides 2-way communication from garage door opener and MyQ accessories.
- Enables monitoring and control of garage door openers controls via smartphone, tablet or computer.
- Receiver with 180 memory registers.

HOMELINK® COMPATIBLE (VERSION V OR SOFTWARE REV. 8)²

¹UK adapter available.

²May require an external adapter depending on the model and year of your vehicle. Visit HomeLink.com for additional information.

ELECTRICAL

LIGHTING LED LIGHT



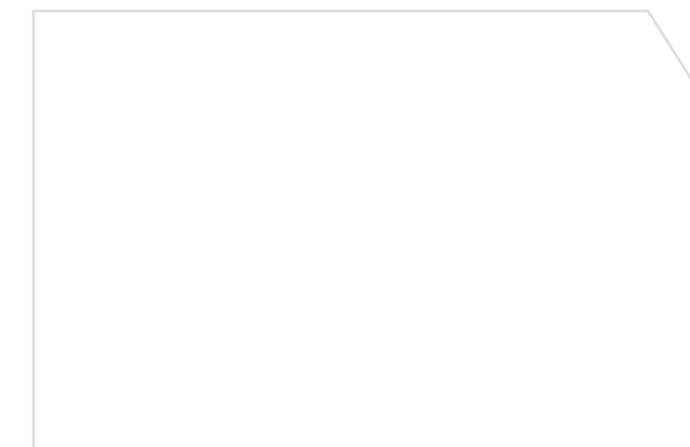
- LED turns on with activation
- Turns off 2.5 minutes after operation
- 0.8 W Stand-by Power

SAFETY AND SECURITY.

- External Quick Release (optional)
- Automatic Trolley Reconnect
- Down Safety Reverse
- Up Safety Stop
- Flashing Light Connector
- Door-in-Door Connector
- Timer to Close (automatic close) Programming (when safety sensors connected)



For more information visit us at liftmaster.eu or contact your local dealer.



LM130EVF 1300N MYQ DC GARAGE DOOR OPENER FOR DOORS UP TO 200 KG

© 2018 LiftMaster All Rights Reserved
Chamberlain GmbH, Alfred-Nobel-Str. 4, D-66793, Saarwellingen
LiftMaster.eu, WEEE-Reg.Nr. DE66256568
MyQ® is a registered trademark of Chamberlain Group
HomeLink® is a trademark of Gentex Corporation
9SLM130EVF02

